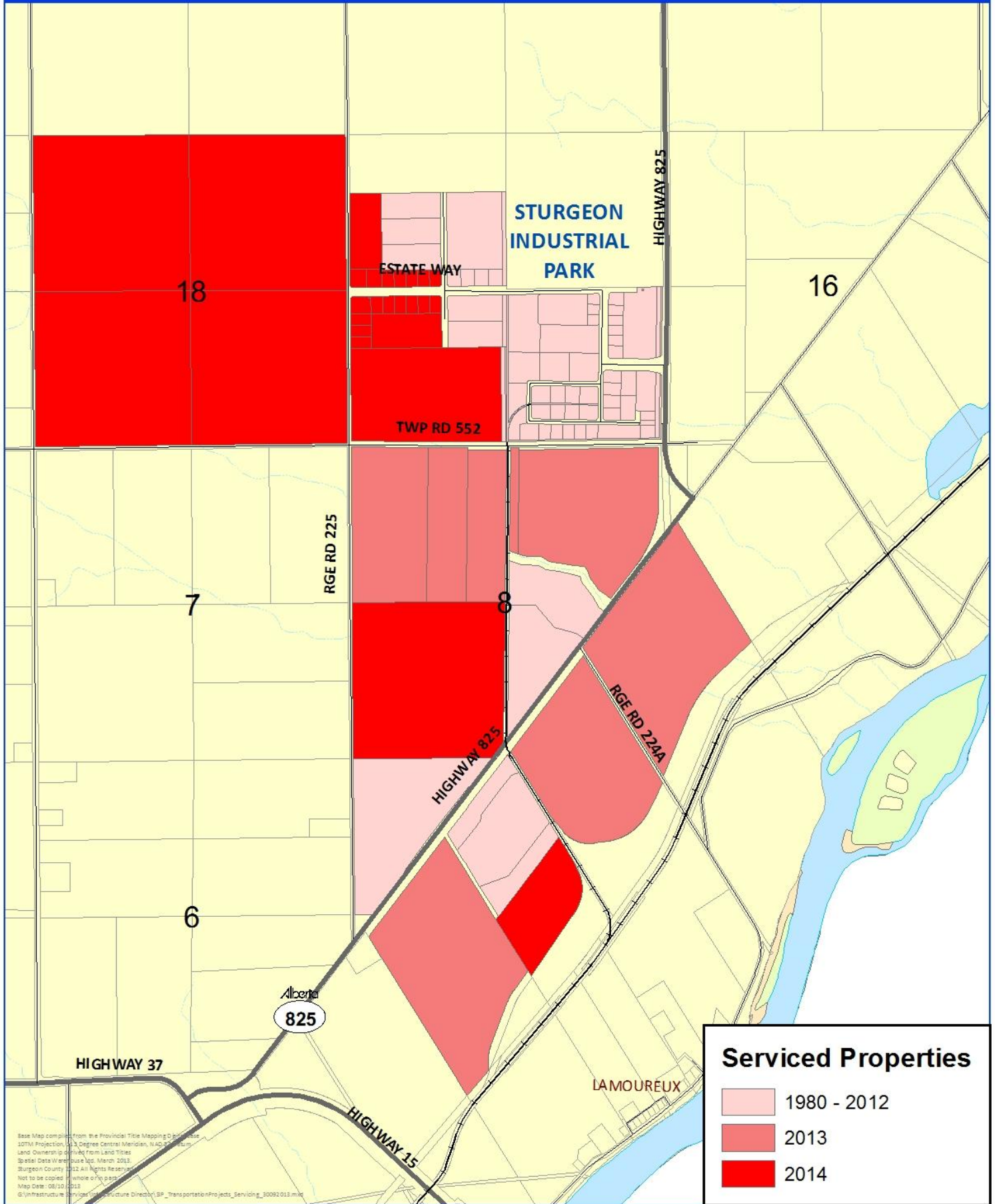


# Sturgeon Industrial Park

## Servicing Progress 1980 - 2014 Projected



Serviced Properties	
<span style="display: inline-block; width: 20px; height: 10px; background-color: #f8d7da;"></span>	1980 - 2012
<span style="display: inline-block; width: 20px; height: 10px; background-color: #f5c6cb;"></span>	2013
<span style="display: inline-block; width: 20px; height: 10px; background-color: #f1948a;"></span>	2014

Base Map compiled from the Provincial Title Mapping Database  
 10TM Projection, UTM, 12 Degree Central Meridian, NAD 83  
 Land Ownership is derived from Land Titles  
 Spatial Data Warehouse Ltd. March 2013  
 Sturgeon County 2012. All Rights Reserved.  
 Not to be copied or used in whole or in part  
 Map Date: 06/10/2013  
 G:\Infrastructure Services\Infrastructure Director\SP\_Transportation\Projects\_Servicing\_30092.013.mxd